



Comos Fluidics – optimum interactivity between fluid technology and E&IC

The Comos Fluidics module is a tool designed for mechatronic monitoring of plants and machines through the complete engineering process and which perfectly integrates hydraulics and pneumatics.

In plant and machine engineering, often, the sectors of hydraulics and pneumatics in particular are characterised by unspecific classification. This is why intelligent linking of the data from hydraulic and pneumatic actuators with that from the electronic control system is of great importance. The innovative concept of object-orientation within **Comos** enables the engineer to have a comprehensive and interdisciplinary view of the whole planning process. Even without CAD skills, it is possible to draw hydraulic and pneumatic diagrams of the workflow between fluid engineering and I&C. Logic functions for designing hydraulic and pneumatic actuators create the control environment.

Key features to benefit you:

- “ Optimum integration and linking of hydraulics and pneumatics with smooth connection to electrical engineering. ”
- “ Implement rationalisation potentials by creating interdisciplinary, intelligent assembly parts. ”
- “ Usable in both basic and detail engineering. ”
- “ Consistent base object management for automation and electrical devices, calculation data, construction time, etc. ”

Comos Fluidics

Due to the checking functionalities integrated in **Comos** by default, bidirectional organisation of the workflow is possible; thus allowing ideal control of data changes and documentation revisions.

Further important features:

“Substantially reduce costs and time expenses through the organisation of interdisciplinary, intelligent assembly parts.”

“**Comos Fluidics** can be used for the basic as well as the detail engineering phase.”

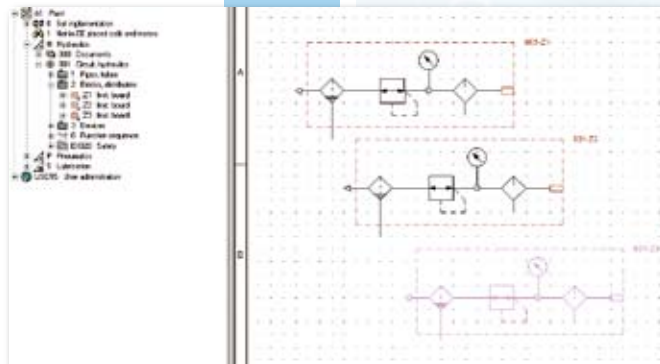
“Automatic logic and checking functions, while working, improve process quality and allow early error detection and correction.”

“Extensive automatisms, like auto-routing for the circuit planning, facilitate and speed up designing.”

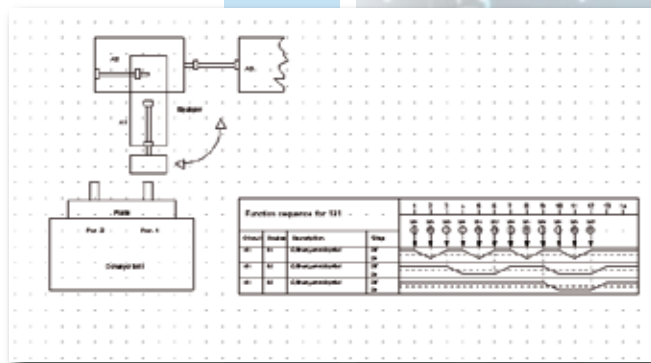
“All base objects for automation and electrical devices, calculation data, assembly times etc. are stored in a single consistent database, thus permitting safe bidirectional data transfer.”

“The typical **Comos** open system architecture supports completely public interface documentation, flexible interface inclusive (API, Visual Basic, ...).”

“Circuit diagrams for fluid technology, complete with all actuator and control circuits, labelled circuitry components, wiring and connections, can be generated without CAD skills.”



Comos Fluidics assembly part



Path-time diagram



More information, as well as contact data for our company locations around the world, can be obtained here:

E-mail: info@comos.com
Internet: www.comos.com

A Siemens Business

As a world-leading provider of comprehensive Life Cycle Management systems, **Comos Industry Solutions** offers professional software solutions and services. The integrated **Comos** concept is designed to cater for both customer-specific requirements and established industrial processes. The individual modules can be used as either stand-alone software or as a complete software suite. **Comos** is the complete solution for end-to-end basic and detail engineering processes, catering for all industrial plant life-cycle phases. The **Comos** philosophy, products and services have long been trusted by plant designers, operators and contractors.